



SAMANVAY ANANTAM - Old R C Patel Estate,
Near Akota Garden, Akota, Vadodara.

+91 8880-131-131 | www.samanvayrealty.net

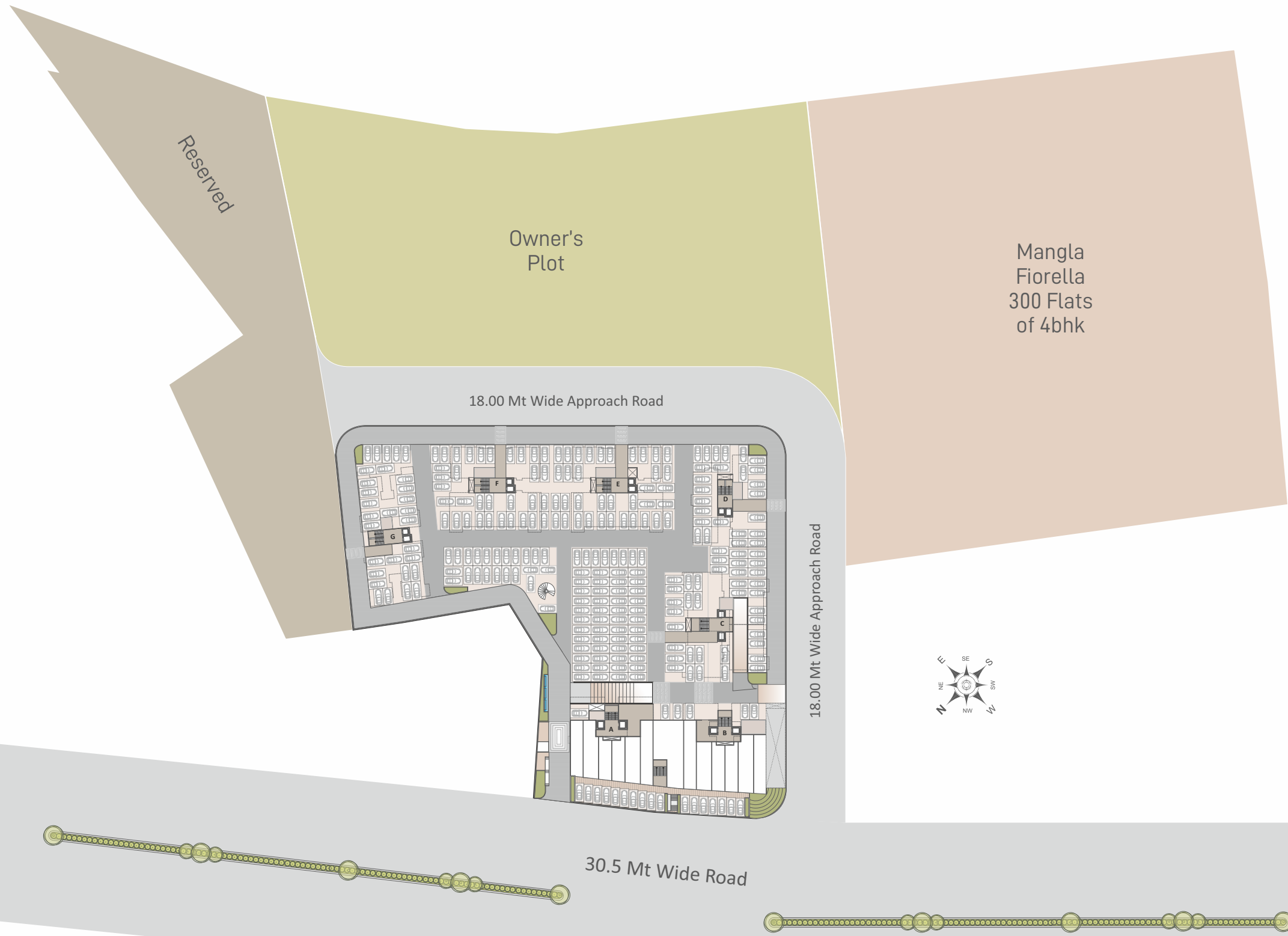
SAMANVAY HOUSE - Nr. Urmi Society & Alkapuri Haveli,
Alkapuri, Vadodara.

Design by  Meraki +91 995259 4477

SAMANVAY[®]
-ANANTAM-

3 & 4 BHK LAVISH APARTMENTS

SITE Layout



Only for Study Purpose.

2nd Basement Layout



Only for Study Purpose.

1st Basement Layout



GROUND Floor Layout



PODIUM Level Layout

TYPICAL Floor Layout



Only for Study Purpose.



Only for Study Purpose.

Tower A

3rd to 14th Floor



RERA Carpet : 2236.22 sq.ft. | Balcony : 245.06 sq.ft. | Wash : 42.01 sq.ft. | Arch. Projection : 207.09 sq.ft. | Total Area : 2730.38 sq.ft. | SBA : 4915.00 sq.ft.

Terrace plan

Second Floor



UNIT 1: Terrace : 23 sq.ft. | UNIT 2: Terrace : 1188 sq.ft.

Tower B

3rd to 14th Floor



Terrace plan

Second Floor

Tower B



RERA Carpet : 2236.22 sq.ft. | Balcony : 273.91 sq.ft. | Wash : 42.01 sq.ft. | Arch. Projection : 206.66 sq.ft. | Total Area : 2758.80 sq.ft. | SBA : 4966.00 sq.ft.

UNIT 1 : Terrace : 1074 sq.ft. | UNIT 2 : Terrace : 198 sq.ft.

Tower C

2nd to 14th Floor



RERA Carpet : 1261.43 sq.ft. | Balcony : 132.28 sq.ft. | Wash : 39.94 sq.ft. | Arch. Projection : 120.55 sq.ft. | Total Area : 1554.20 sq.ft. | SBA : 2798.00 sq.ft.

Terrace plan

First Floor



UNIT 2 : Terrace : 834 sq.ft. | UNIT 3 : Terrace : 669 sq.ft.

Tower C

Tower D

2nd to 14th Floor



Unit 1 : RERA Carpet : 1308.14 sq.ft. | Balcony : 178.38 sq.ft. | Wash : 56.27 sq.ft. | Arch. Projection : 197.84 sq.ft. | Total Area : 1740.63 sq.ft. | SBA : 3133.00 sq.ft.
Unit 2 & 3 : RERA Carpet : 1262.83 sq.ft. | Balcony : 92.99 sq.ft. | Wash : 39.94 sq.ft. | Arch. Projection : 111.08 sq.ft. | Total Area : 1506.84 sq.ft. | SBA : 2712.00 sq.ft.

Terrace plan

First Floor



UNIT 2 : Terrace : 388 sq.ft. | UNIT 3 : Terrace : 926 sq.ft.

Tower D

Tower E

2nd to 14th Floor

Terrace plan

First Floor

Tower E



Unit 1 & 2 : RERA Carpet : 1123.65 sq.ft. | Balcony : 68.74 sq.ft. | Wash : 28.78 sq.ft. | Arch. Projection : 110.33 sq.ft. | Total Area : 1331.00 sq.ft. | SBA : 2396.00 sq.ft.
Unit 3 & 4 : RERA Carpet : 1262.83 sq.ft. | Balcony : 129.80 sq.ft. | Wash : 39.84 sq.ft. | Arch. Projection : 114.74 sq.ft. | Total Area : 1547.21 sq.ft. | SBA : 2785.00 sq.ft.

UNIT 1 : Terrace : 630 sq.ft. | UNIT 2 : Terrace : 496 sq.ft.

Tower F

2nd to 14th Floor

Terrace plan

First Floor

Tower F

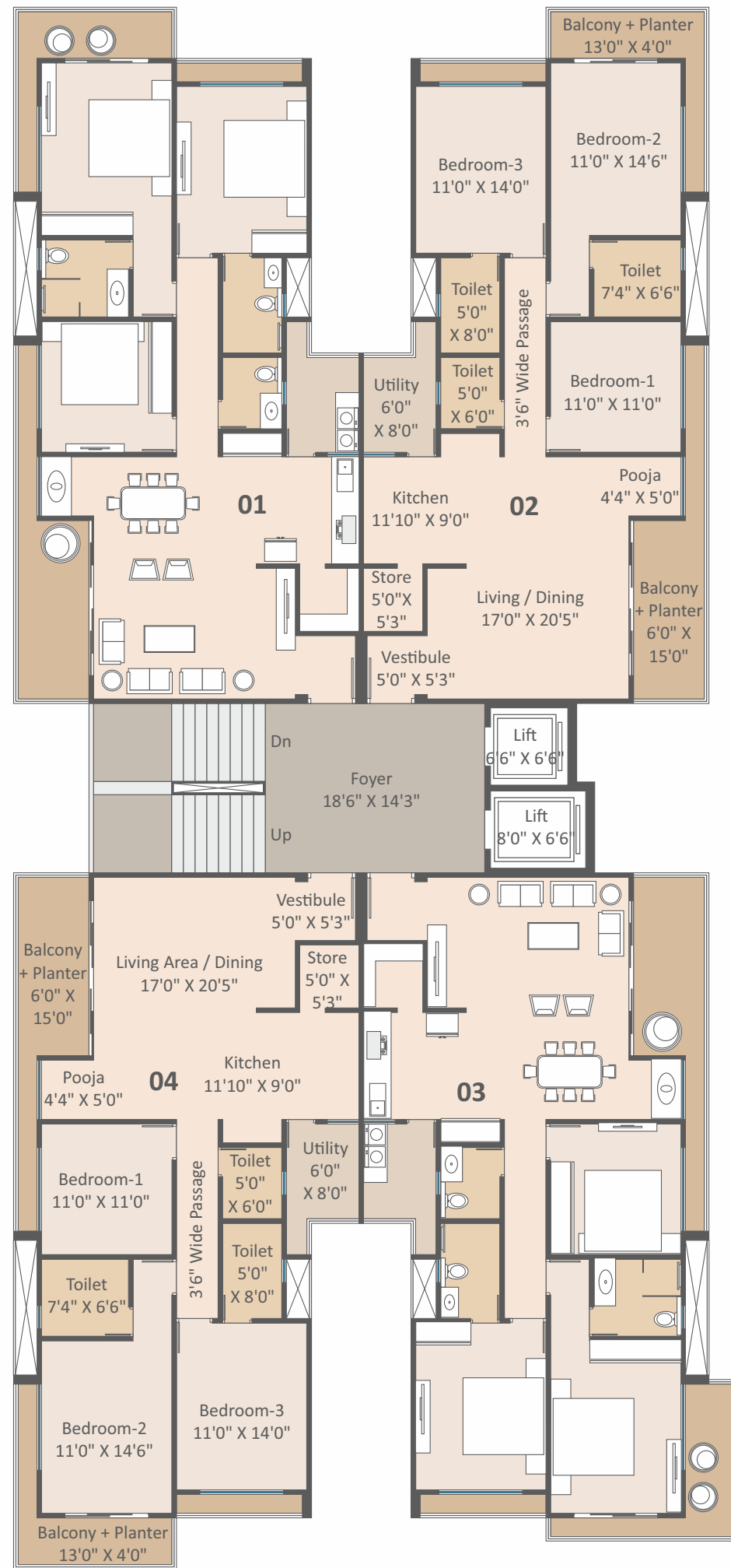


Unit 1 & 2 : RERA Carpet : 1123.65 sq.ft. | **Balcony :** 68.74 sq.ft. | **Wash :** 28.78 sq.ft. | **Arch. Projection :** 110.33 sq.ft. | **Total Area :** 1331.00 sq.ft. | **SBA :** 2396.00 sq.ft.
Unit 3 & 4 : RERA Carpet : 1262.83 sq.ft. | **Balcony :** 129.80 sq.ft. | **Wash :** 39.84 sq.ft. | **Arch. Projection :** 114.74 sq.ft. | **Total Area :** 1547.21 sq.ft. | **SBA :** 2785.00 sq.ft.

UNIT 1 : Terrace : 513 sq.ft. | **UNIT 2 :** Terrace : 726 sq.ft.

Tower G

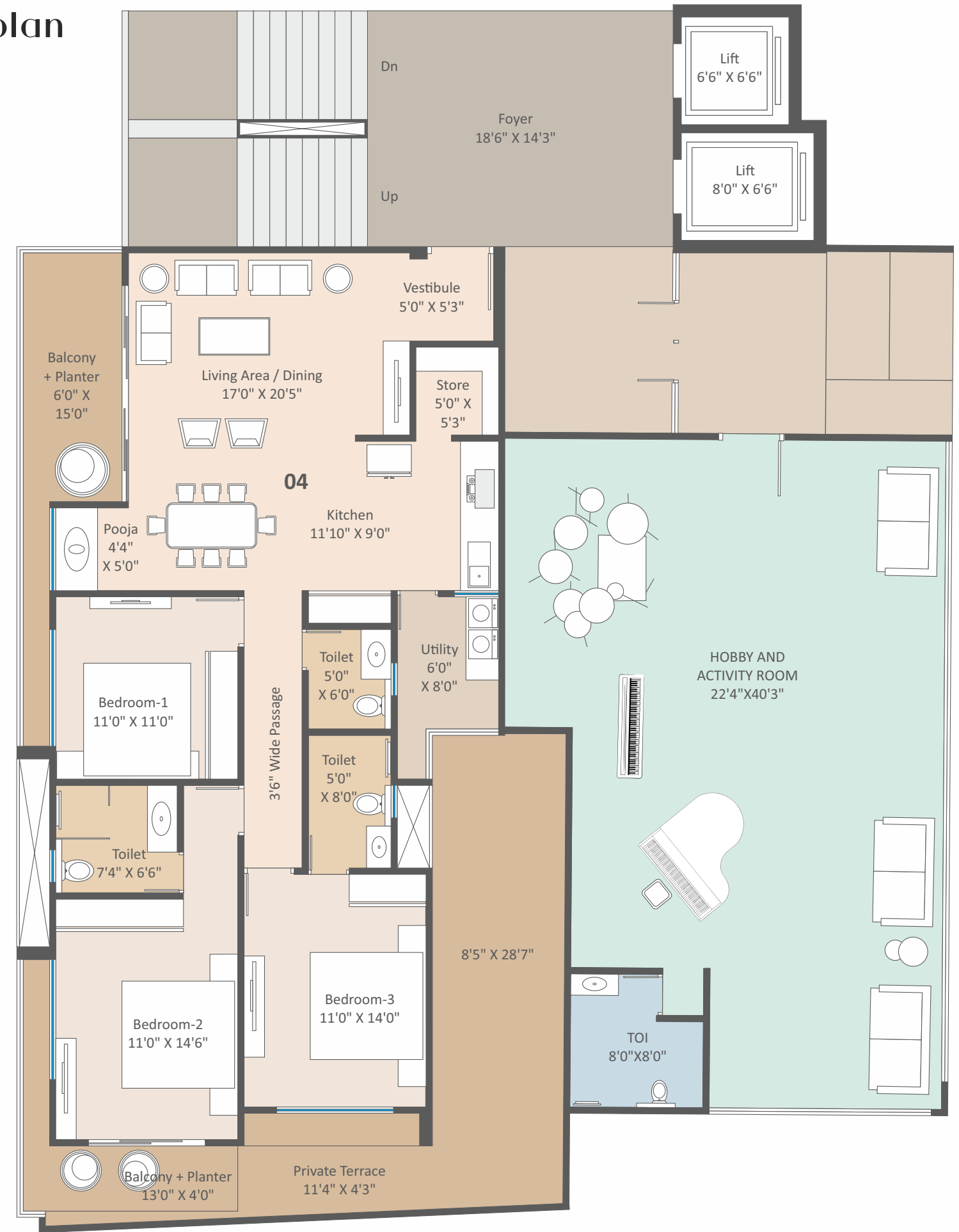
2nd to 14th Floor



Terrace plan

First Floor

Tower G



RERA Carpet : 1167.57 sq.ft. | Balcony : 95.23 sq.ft. | Wash : 39.32 sq.ft. | Arch. Projection : 121.52 sq.ft. | Total Area : 1423.64 sq.ft. | SBA : 2563.00 sq.ft.

UNIT 4 : Terrace : 286 sq.ft.

SPECIFICATIONS

STRUCTURE

- Earthquake Resistant RCC Frame Structure

FLOORING

- Wooden Flooring in 2 Master Bedrooms in 4BHK and in 1 Master Bedroom in 3BHK
- Large Size Italian Finish Tiles in Floor
- Kota Stone in Wash Area
- Bathroom & kitchen wall tiles up to lintel level as per Architect Selection

ELECTRICAL

- Copper Piping & AC Point in All Bedrooms and Living room
- L&T / Legrand / Schneider or Equivalent Premium Brand Switch
- Separate MCB for all rooms
- Ample Electrical Point As Per Architect Selection
- Tv points in Living room and 2 Master bedrooms
- Provision for EV Charging Point

DOORS & WINDOWS

- Veneer Finish Main Door with Box Frame
- Both side Laminated doors with granite frames for internal doors
- Standard company locks
- Video Door Bell System
- Premium quality Aluminium / UPVC Windows
- Mosquito Net

KITCHEN

- Premium Quality Full Body Tile / Granite For Platform as per Architect Selection
- Kitchen Sink With Drain Board & Flexible Faucet

WASHROOMS

- Multi-Function Shower in 2 Master toilet in 4BHK and in 1 Master Toilet in 3BHK
- Jaquar / Kohler / Roca or equivalent CP & Sanitary fittings
- Centralize hot water system provision.

WALL FINISH

- Interior : Single coat Plaster with Putty Primer on walls only
- Exterior : Double coat plaster with Weather proof Quality / Texture Paint

PARKING

- 2 Cars allotted parking for 3 BHK
- 4 Cars allotted parking for 4 BHK

AMENITIES

- | | |
|---|--|
| • Main Entrance | • Pool & Snooker Room |
| • Security Cabin | • Indoor Board Games Area |
| • Pick Up & Drop Off Area | • TT Room |
| • Swimming Pool | • Toddler Room |
| • Pool Deck | • Netflix Lounge (Mini Theater) |
| • M/F Changing Room | • Conference Room |
| • Multi-Purpose Hall | • Co Working Space |
| • Badminton Court | • Estate Manager's Cabin |
| • Squash Court | • Meter Room |
| • Skating Rink | • Senior Citizen Seating |
| • Chess Board | • Secured Entrance Foyer |
| • Multi-Purpose Sport Court & Box Cricket | • 3 Level Parking Area |
| • Toddler Area | • Allotted Car Parking |
| • Seating Plaza | • Temple |
| • Gazebo | • Well Planned Landscape Area At Podium Level |
| • Party Lawn | • Bench Seating |
| • Wide Walkway | • CCTV Surveillance For Security |
| • Dance / Zumba / Yoga Studio | • Stretcher Lift |
| • Hobby & Activity Room | • C. Toilet For Housekeeping Staff |
| • Aerobics & Cardio Room | • Well Planned Separate Entry- Exit Ramp |
| • Heavy Weight Lifting Area | • Plinth Height From Road Level is 6'-7" Ft |
| • Gymnasium | • Solar Panel On Roof Top For Common Utilities |
| • Library | |

