



BURHANI PLAZA

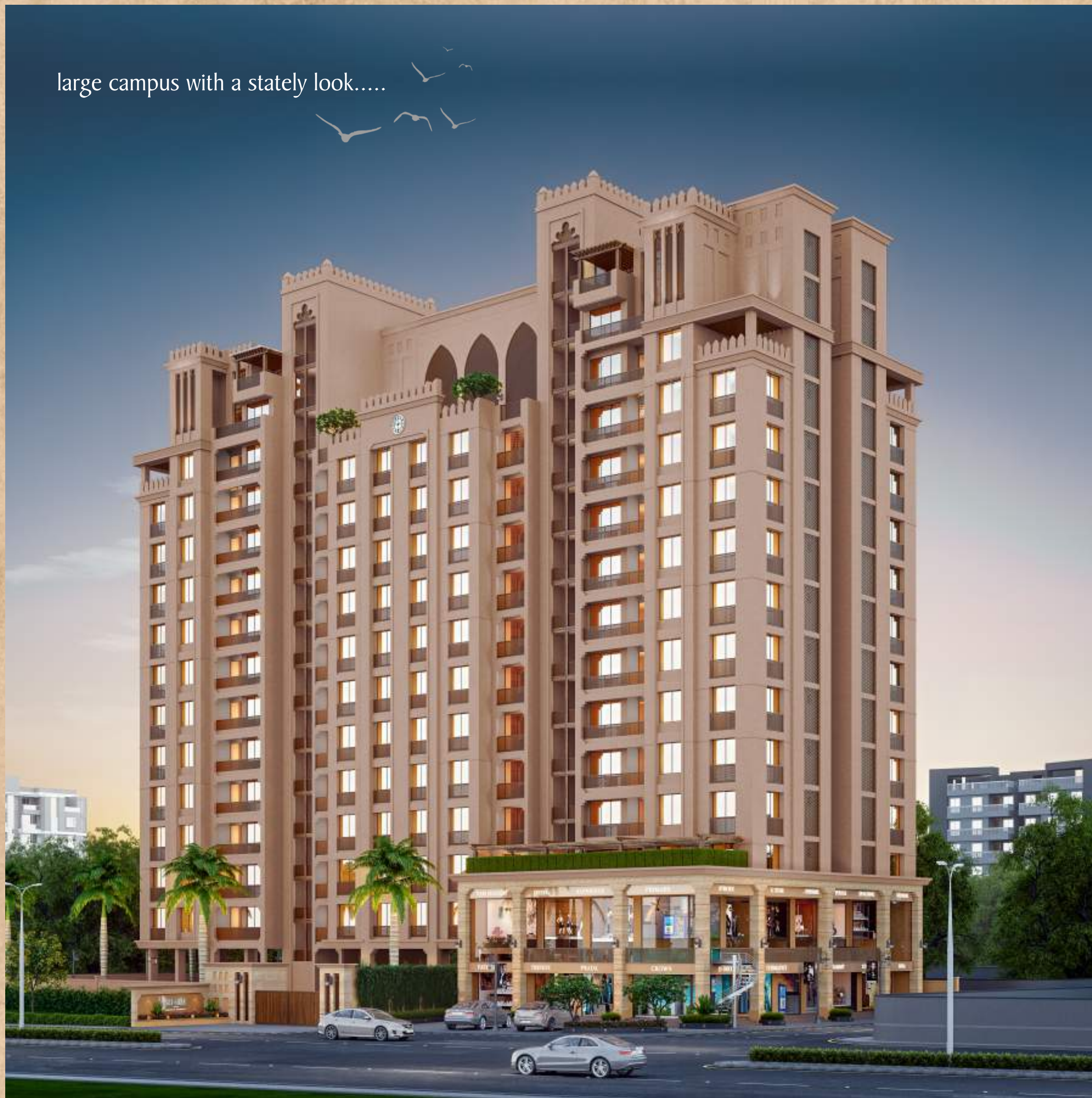
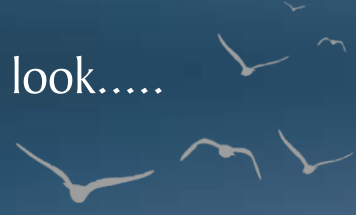
A Marvel of Vadodara



SHOPS & 2/3 BHK **SPACIOUS** APARTMENTS

A Project by SPACE INFRA

large campus with a stately look.....



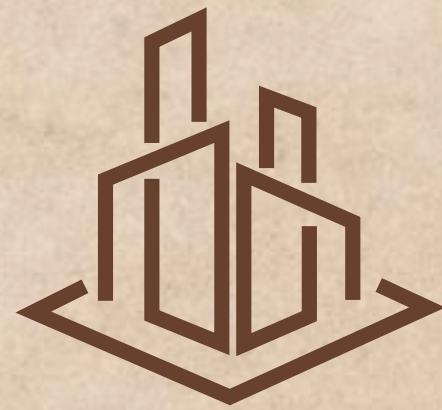
better
living
ASSURED!!!



EXTRAVAGANT LIVING in the heart of city @ Ajwa Road...

You will be a proud owner of Luxurious 2 & 3 BHK Flats and Penthouses where you will unveil a life with lavish living that will bring a new enthusiasm and zeal at "BURHANI PLAZA". The luxurious amenities provided here will make you feel at the top of the world.

a host of club amenities
that makes a vibrant & Joyful community...




- 24 Hours Water Supply facility
- High Quality Passenger Lift
- Gym Area
- Decorative main gate with Security cabin and CCTV Cameras
- Garden Area / Senior Citizen Seating Area
- Geyser & R. O. Point in each unit
- Firefighting System
- Ample Parking Space
- Swimming Pool

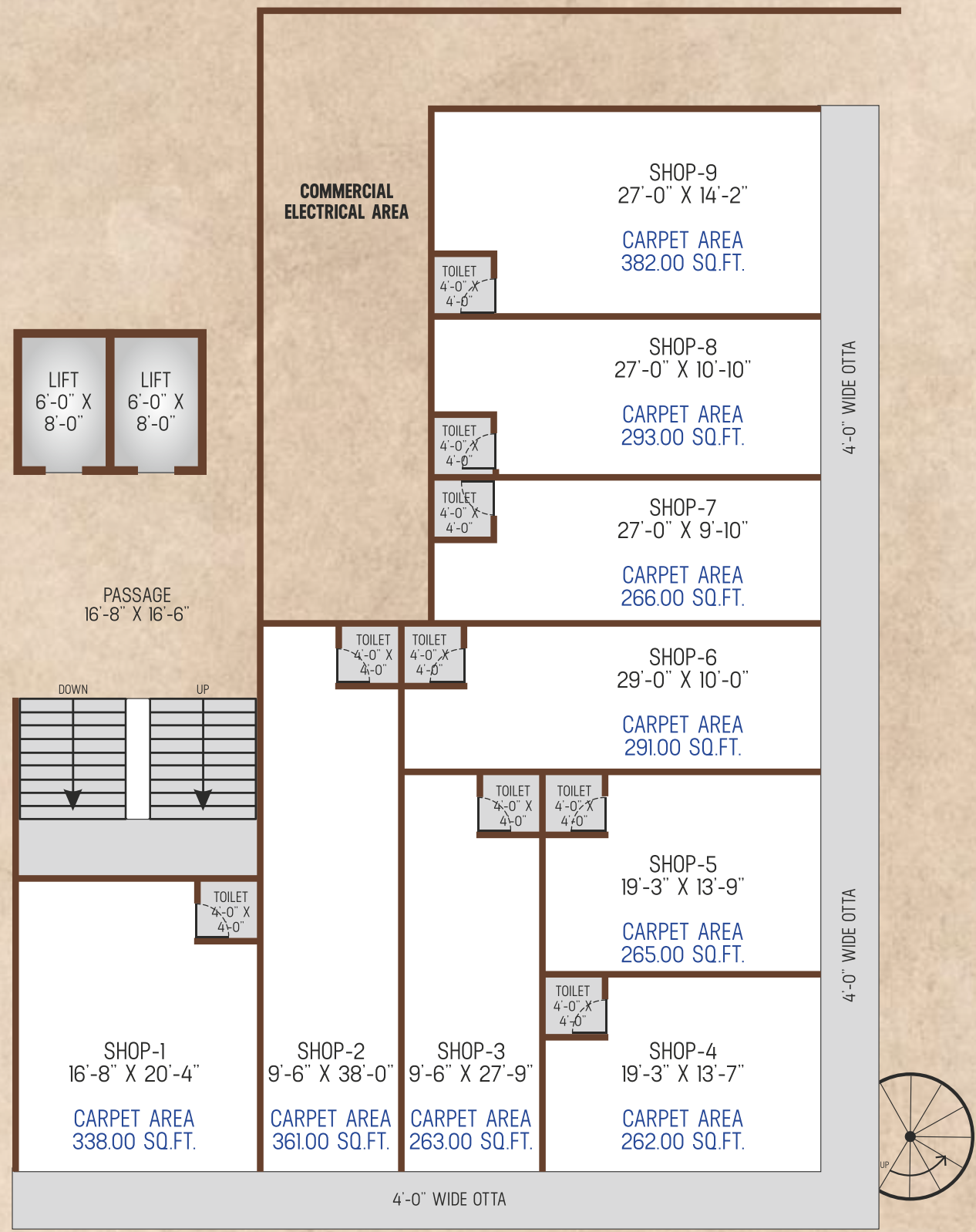
specifications...


- **STRUCTURE:** The Structural design provided is RCC, Earth Quake Resistant.
- **PAINTING:** Internal walls finished with Putty, while External walls finished with double coat plaster & weather proof paint.
- **INFRASTRUCTURE:** RCC trimix finish road with paver block / parking lights.
- **ELECTRIFICATION:** Modular switches with concealed copper wiring of approved quality, sufficient electrical points as per architect's plan.
- **DOOR & WINDOWS:** Laminated flush doors and Aluminium anodized sliding / openable windows with light safety bar.
- **FLOORING:** Premium vitrified tiles.
- **TOILETS:** Designer bathrooms with standard quality fittings, vessels, glazed tile dado upto lintel level.
- **KITCHEN:** Granite kitchen platform with SS Sink, glazed tile dado from platform upto lintel level.

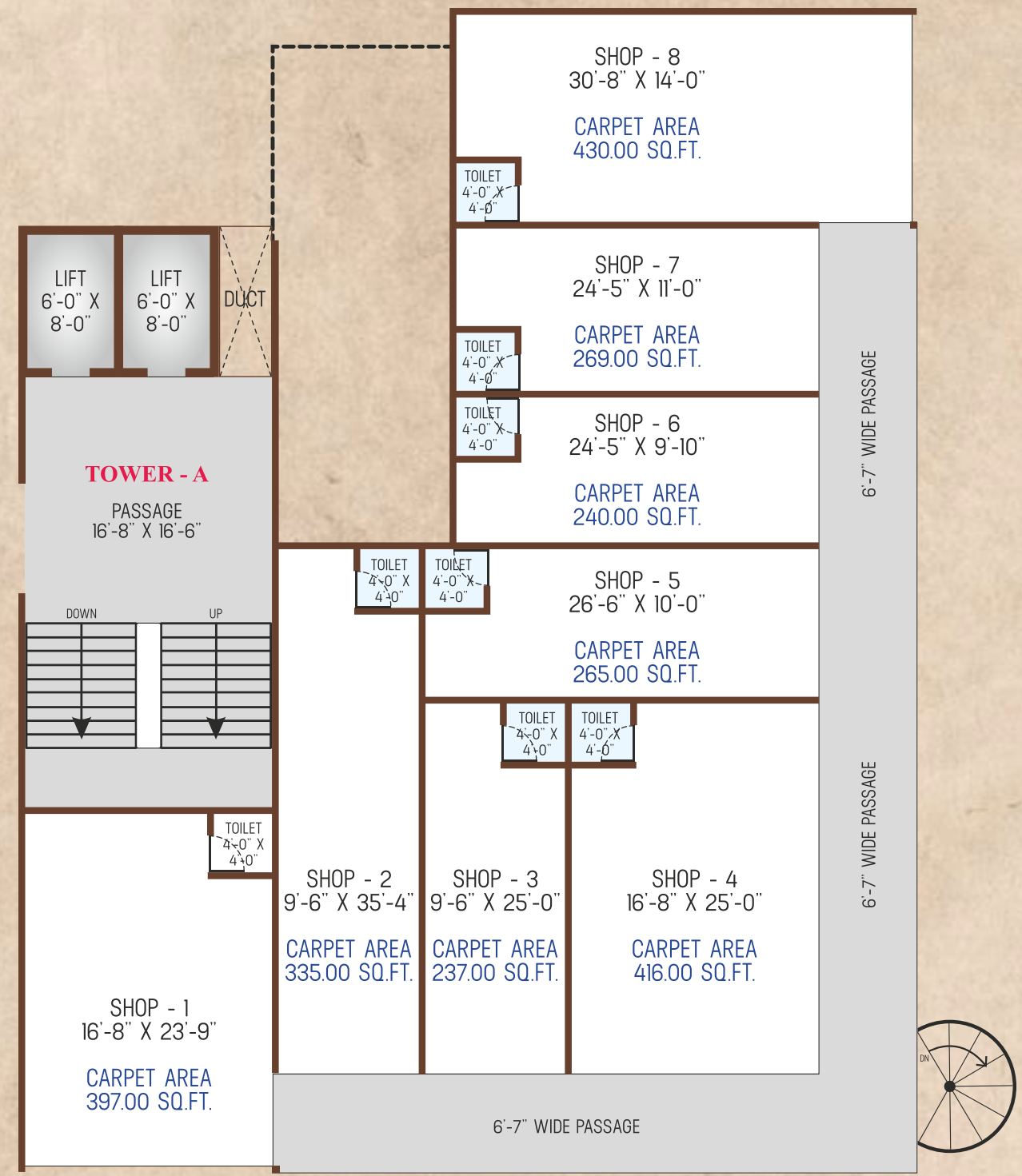


your private
club complex awaits your arrival...


 ground floor plan (shops / showrooms)

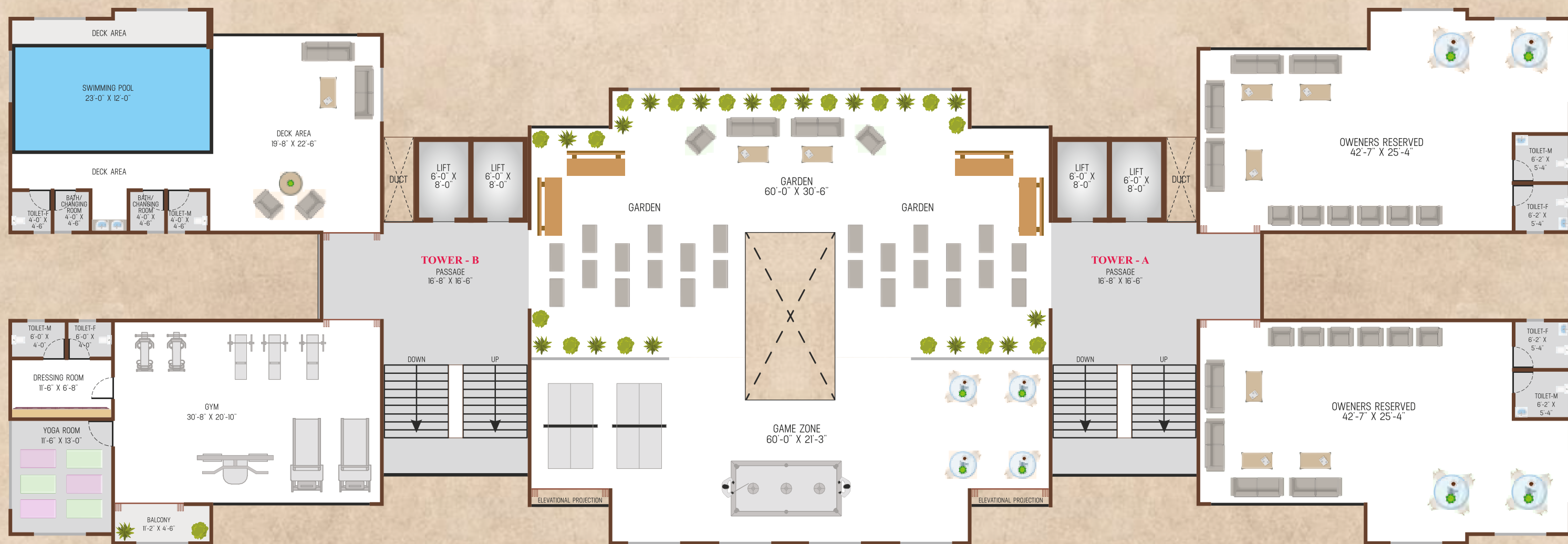


 first floor plan (shops / showrooms)





 common aminity floor plan

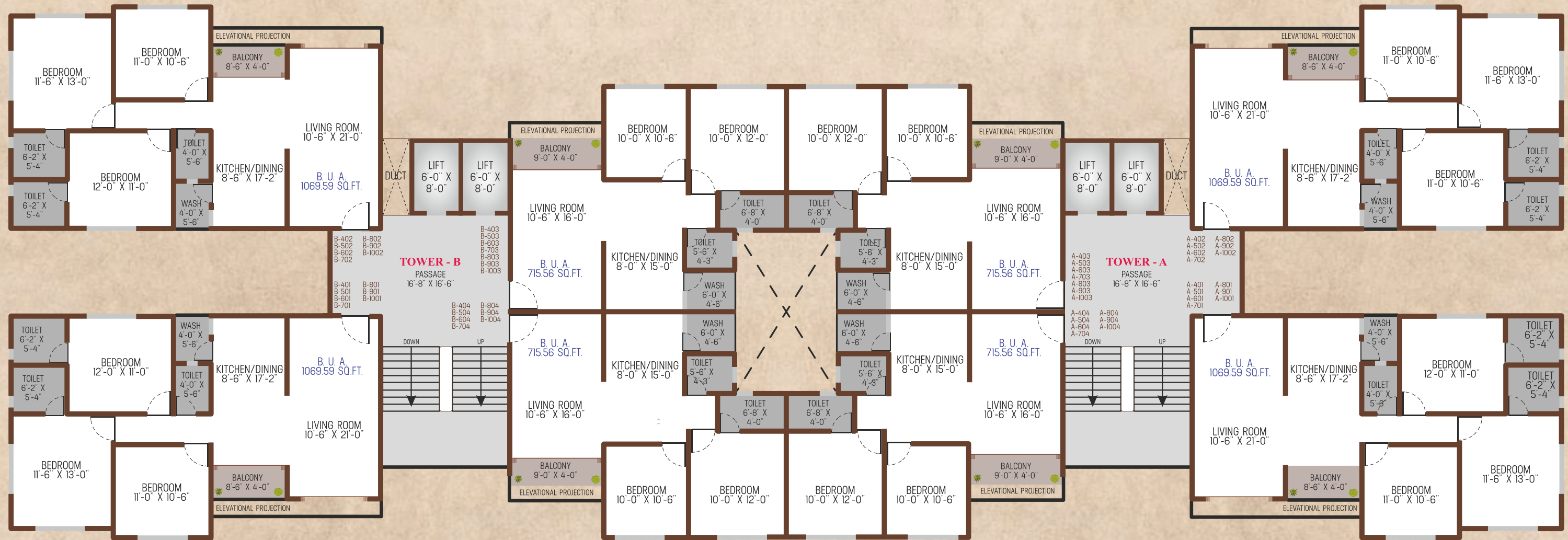


a generous mix of
outdoor & indoor delights



The Clubhouse at BURHANI PLAZA offers exciting outdoor amenities as well as enjoyable indoor facilities for leisure. There is something for every age group. Indeed, it is a venue where life shall bloom and new relationships shall get forged with like minded neighbours.

typical floor plan (3rd to 10th floor)



drive into a paradise
of luxurious ambience!

Life at BURHANI PLAZA is full of pleasant memories. Drive past the well adorned gates in to a peaceful and blissful campus fo delightful living spaces and premium recreational amenities. An abode that promises a truly refined living for its few lucky residents.




11th floor plan

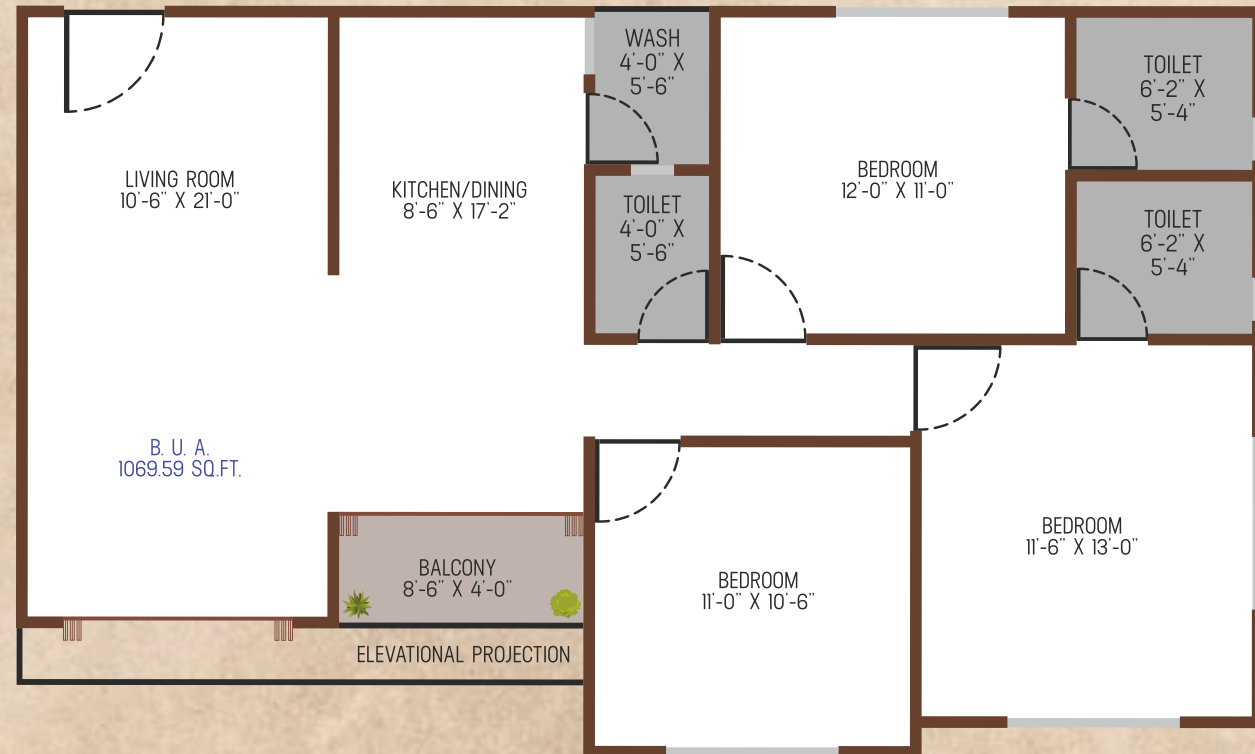



live the life
of your dreams...

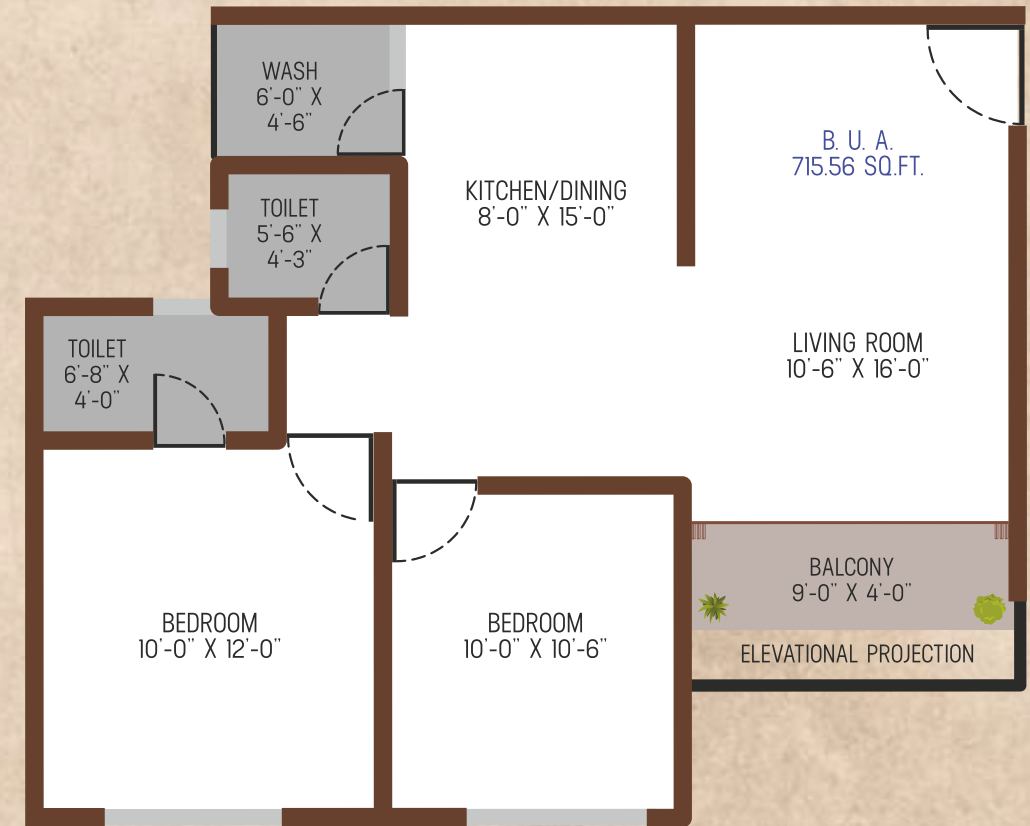


Where your desires are crafted into an abode. Dive into the comfort of life extraordinary. Unveil the elegance of sophisticated living. Line the life of your dreams at BURHANI PLAZA.

 3 bhk plan

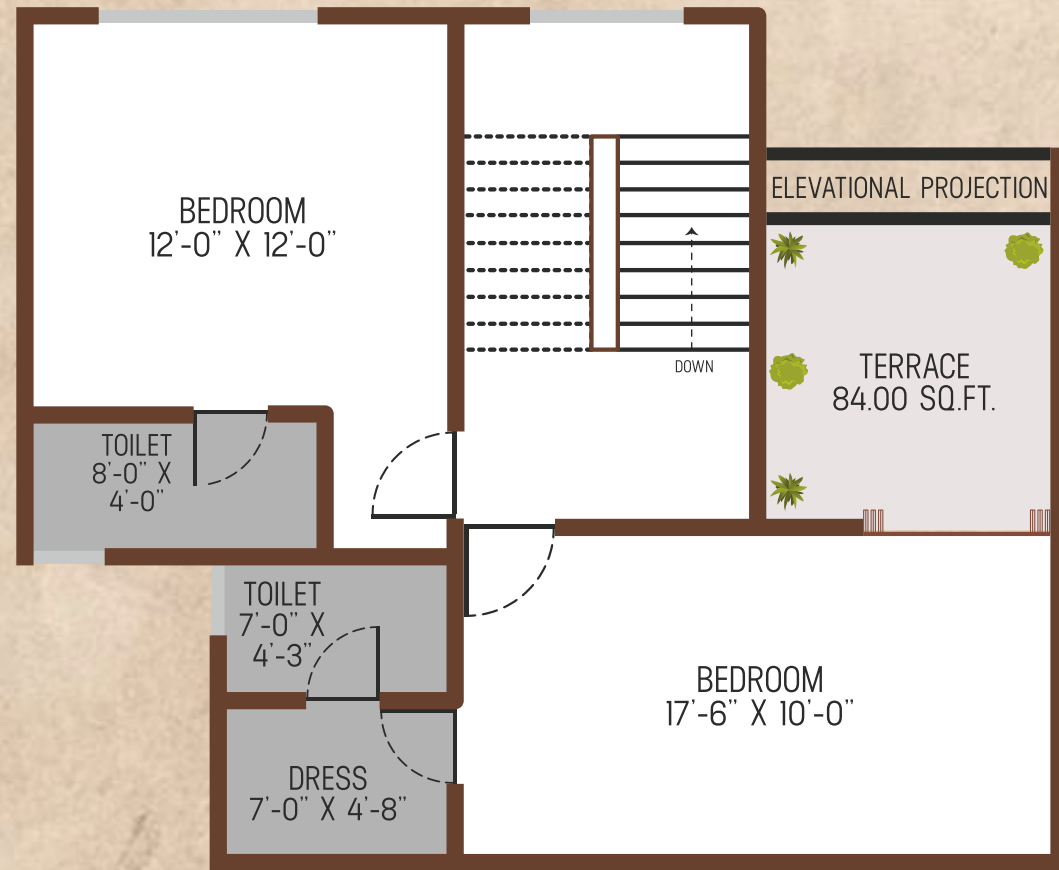


 2 bhk plan

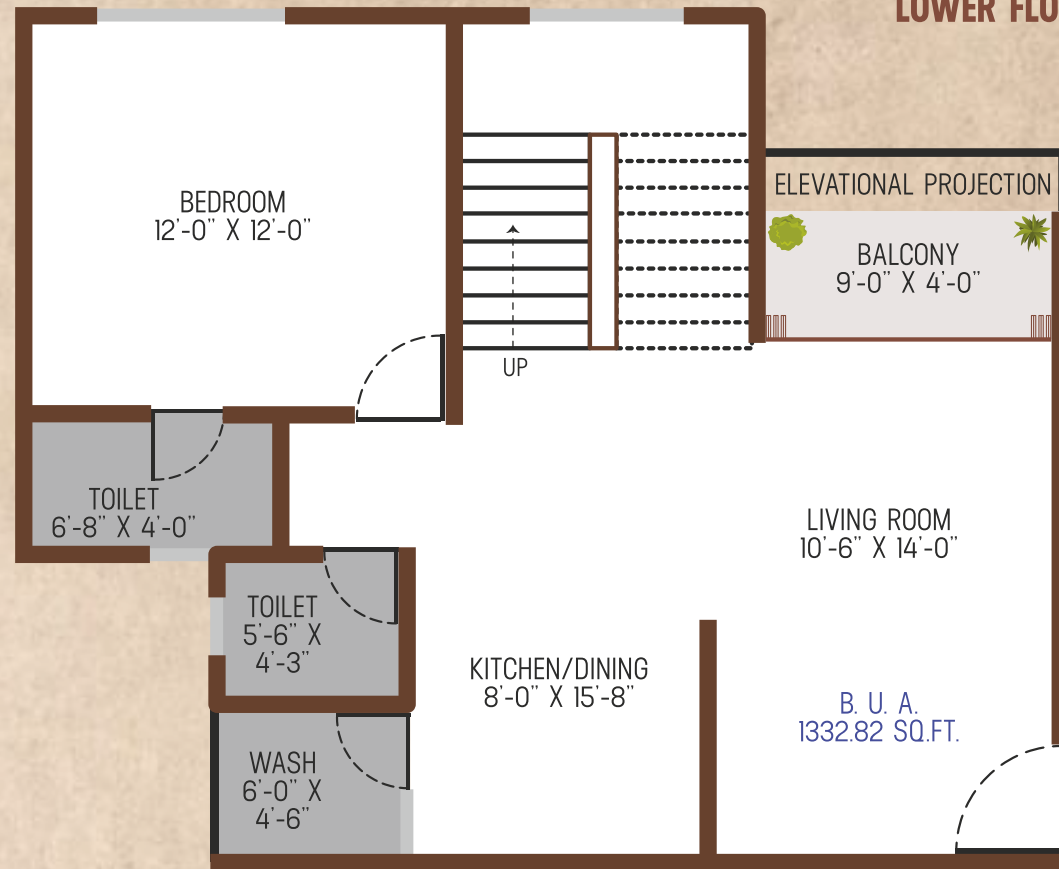


12 & 13 floor penthouse

UPPER FLOOR

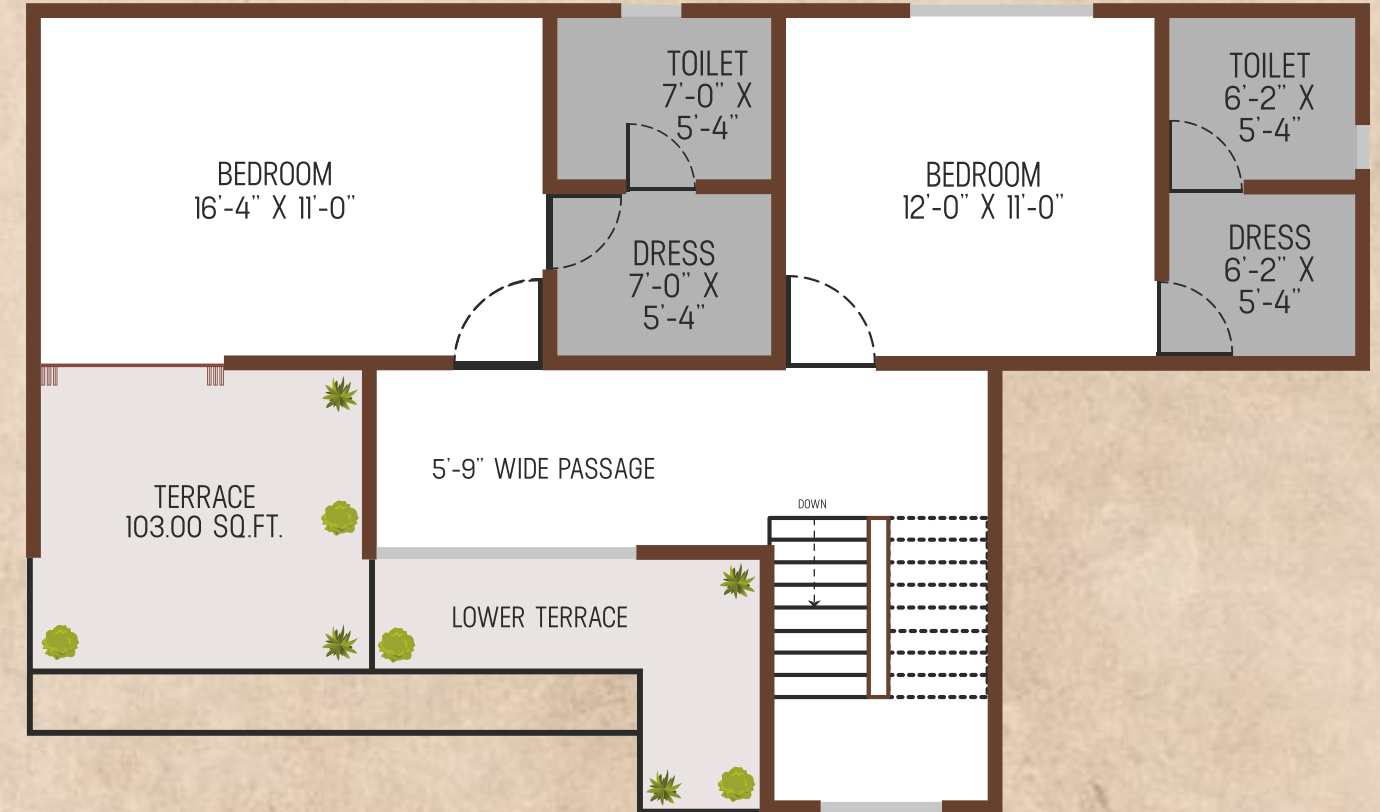


LOWER FLOOR

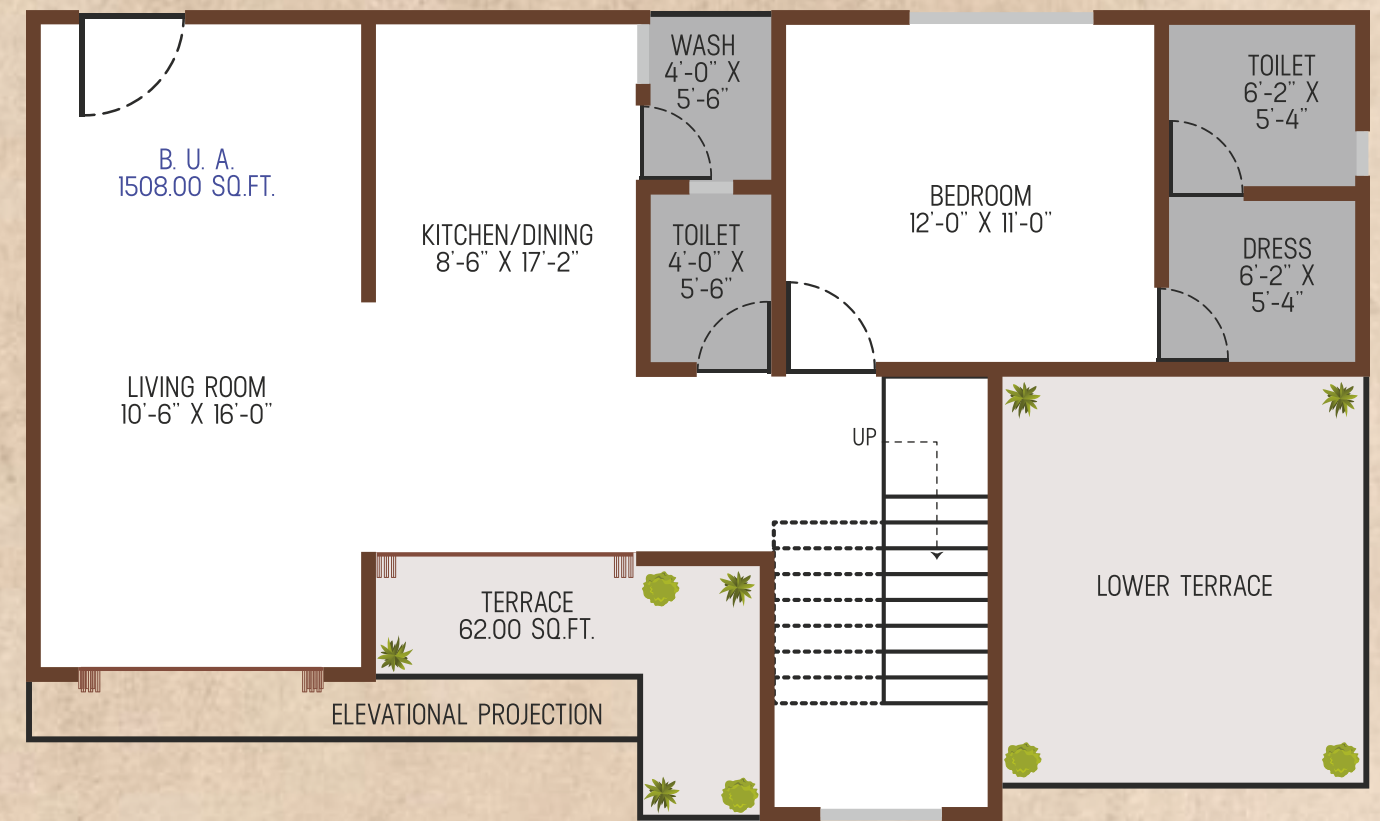


12 & 13 floor penthouse

UPPER FLOOR



LOWER FLOOR




 layout plan



Disclaimer:

• The information contained in this brochure is subject to change as may be approved by the competent authorities and cannot form part of any form or contract. • All plans are subject to any amendments approved by the competent authorities. • This brochure shall not be treated as a legal document; it is only for the purpose of information. • The areas are indicative only. The measurements indicated in the plan may vary at the time of construction. • All landscaping is conceptual and shall be as per architect's design. Illustration in the brochure are artist impressions and serve only to give an approximate idea of the project. While every reasonable care has been taken in providing this information, the developers cannot be held responsible for any inaccuracy. • The developers reserve all the rights to make any changes as may be necessitated from time to time in the layout, building plan and specifications without any prior notice. Such changes would be binding to all members.

 key plan (location)



: A Project by :



Burhani Plaza
Near Dawoodi Masjid, Near Kathiyawadi Hotel
Sardar Estate, VIP Road, VADODARA.

: For Booking :

+ 91 78678 66999 / 93762 15125

E. info@spaceinfravadodara.com | W. www.spaceinfravadodara.com

: Architect :

DESIGN STUDIO, Vadodara

: Construction by :

ELITE CONSTRUCTION, Vadodara

: Plumbing Consultant :

AARASP AQUA ENGINEERS, Vadodara

: Structure Design :

ZARNA ASSOCIATES, Vadodara

: Brochure Design :

T SQUARE MEDIA, Vadodara

: RERA REG. NO.:

PR/GJ/VADODARA/VADODARA/Others/MAA09023/07092 I